



Barrier Technologies®

Protective Aprons and Apparel



 **ULTRAFLEX™**
Anti-Bacterial Stain Resistant Fabric

"Your Safety is Our Concern"™




Your Safety is Our Concern™




Anti-Bacterial Stain Resistant Fabric

Welcome to our new protective apron and apparel catalog. Through our steadfast commitment to product innovation and development, we are proud to bring you our new and existing product editions.

As a leading manufacturer of radiation protection products, we strive to develop and manufacture innovative products designed to protect healthcare personnel from the harmful effects of scatter radiation.

We are excited to introduce our new  anti-bacterial stain resistant fabric and our  Secure Shield™ line of washable aprons and thyroid collars. Our unique  fabric protects healthcare practitioners from all types of occupational hazards by being completely impervious to liquids thus eliminating stains and exposure to hazardous fluids produced during procedures.

Our revolutionary  Secure Shield™ core material offers health care practitioners the unique opportunity to launder their protective garments and eliminate harmful bacteria that is often produced during clinical procedures.

We invite you to explore our catalog and learn more about our company and products to see how we have become a leading global provider of radiation protection products recognized for outstanding product quality and superior customer service.





SUPPORT VEST AND SKIRT

- Fully adjustable integrated back support belt provides maximum support to the lower lumbar region
- Maximum freedom of movement with full front & back protection
- Even weight distribution helps reduce body fatigue
- Elastic insert in skirt affords a more comfortable fit
- Shoulder pads provide additional comfort
- Available in **ULTRAFLEX™**, Diamond Ripstop, Solid Nylon, various Camouflage and Custom prints



BARRIER FLEX VEST AND SKIRT

- Elastic back provides greater comfort, adjustment & support especially during long procedures
- Even weight distribution helps reduce body fatigue
- Optional elastic insert in skirt affords a more comfortable fit
- Shoulder pads provide additional comfort
- Available in **ULTRAFLEX™**, Diamond Ripstop, Solid Nylon, various Camouflage and Custom prints



STANDARD VEST AND SKIRT

- Maximum protection & freedom of movement
- Ideal choice for long procedures
- Even weight distribution helps reduce body fatigue
- Optional elastic insert in skirt affords a more comfortable fit
- Shoulder pads provide additional comfort
- Available in **ULTRAFLEX™**, Diamond Ripstop, Solid Nylon, various Camouflage and Custom prints



BARRIER WRAP WITH SUPPORT

- Provides full wrap around protection against direct & scatter radiation
- One-piece design enables easy-on & easy-off
- Fully adjustable integrated back support belt provides maximum support to the lower lumbar region
- Full length adjustable Velcro closures ensure a comfortable & secure fit
- Shoulder pads provide additional comfort
- Available in **ULTRAFLEX™**, Diamond Ripstop, Solid Nylon, various Camouflage and Custom prints



THE BARRIER FLEX

- Provides excellent weight distribution & comfort
- Two fully adjustable Velcro straps cross in the back & attach in the front providing a comfortable fit while keeping the apron securely on the shoulders
- Adjustable elastic inserts in the rear flaps offer greater comfort, adjustment & support
- Comfortable fit during long procedures
- Shoulder pads provide additional comfort
- Available in **ULTRAFLEX™**, Diamond Ripstop, Solid Nylon, various Camouflage and Custom prints



ADJUSTABLE FLEX WITH WIDE BELT

- 6" fully adjustable wide elastic belt shifts the weight of apron from the shoulders to the hips
- Even weight distribution for less stress on neck and back
- Fully adjustable back saver belt provides maximum support to the lower lumbar region
- Velcro shoulder strap helps prevent slippage
- Shoulder pads provide additional comfort
- Available in **ULTRAFLEX™**, Diamond Ripstop, Solid Nylon, various Camouflage and Custom prints



OR QUICK RELEASE

- Designed for quick release in the OR without compromising the sterile field.
- Just release the Velcro straps at the hips & the apron falls off
- Adjustable elastic inserts in the rear flaps offer greater comfort, adjustment & support
- Shoulder pads provide additional comfort
- Available in **ULTRAFLEX™**, Diamond Ripstop, Solid Nylon, various Camouflage and Custom prints



THE BASIC

- Our most economically priced frontal apron
- 2" Buckle with Velcro shoulder strap to keep apron snug
- .5mm Lead equivalent
- Available in **ULTRAFLEX™**, Diamond Ripstop, Solid Nylon, various Camouflage and Custom prints



Washable Dental Apron







Features

- Machine Washable
- Fully customizable
- Secure Shield™ Lead Free protection

Benefits

- Eliminates cross contamination between patients
- Customization enhances practice image and referrals
- Environmentally friendly

Care Guide

-  • Machine Wash Cold, Tumble Dry Low
-  • DO NOT use chlorine bleach
-  • DO NOT dry clean
-  • DO NOT iron



Thyroid Collars



Disposable



Visor

- 0.5mm Pb protection
- Available either separate, sewn, or tethered to your apron
- Available in all fabrics
- Provides complete protection to the neck and sternum

PROTECTIVE ACCESSORIES

BARRIER BAND



- Pb Free
- Disposable
- One size fits all
- Elastic fitted closure
- Available in 0.35, or 0.5mm Pb protection



- Protection for the entire head
- Velcro fitted closure
- Available in 3 sizes
- Available in 0.35, or 0.5mm Pb protection

LEAD CAP



PROTECTIVE SLEEVE



- Available in full and half length
- Protects arm against scatter radiation
- Effectively shields long bones
- 0.5 Pb equivalency protection

DEMI APRON WITH RACK



- Attached belt with 1" buckle back
- Available in 4 sizes
- 0.5 Pb equivalency protection

- Shields pelvic region
- Easy to use 2" buckle belt closure
- Can be worn in either front or back
- Excellent protection for patient and staff

HALF APRON



ELASTIC BELT WITH DRAW STRINGS



- Employs a cinch & pulley system to evenly tighten the belt
- Provides extra rigid back support while supporting the weight of the apron
- To be worn over the apron
- Will not roll at the waist
- Available in SM, MD, LG, XL & XXL

- For optimal lower back support & comfort
- Firm but flexible side supports eliminate back strain and fatigue
- Can be worn either over or under any apron
- Can be built into apron for permanent use
- Vented material provides all day comfort
- Available in SM, MD, LG, XL, & XXL

ORTHO BELT



PROTECTIVE APRON TOTE BAG



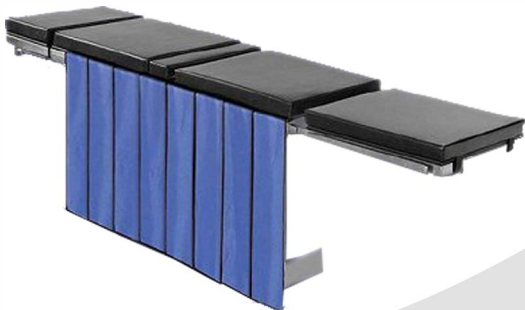
- Convenient way to carry your protective apparel
- 28" length minimizes the need to fold your apron
- EZ-Carry handle & shoulder strap included
- Fully customizable with your name and company logo embroidered.

PROTECTIVE BLANKETS

- Nylon-covered 0.50mm equivalent protective blanket may be used for shielding patients or equipment.



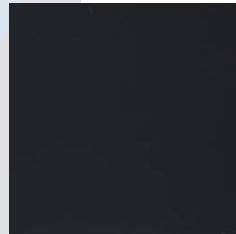
TABLE SHIELDING DRAPES



- Custom Table Scatter Shield features a saddle back design allowing a secure fit to any style imaging table.
- The overlapping paneled shields are secured to a padded surface that simply drapes over the tabletop, beneath the mattress.
- Pleated lead panels enable staff and c-arm mobility
- Customized to specific table dimensions panel lengths of to include table end flaps.
- Constructed of 0.5mm Pb equivalent panels.
- Select from our wide range of solid color nylons, ripstops, or our durable anti-microbial coverings.

Apron Fabric & Color Options

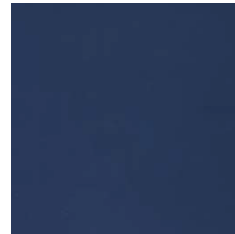
ULTRAFLEX™ ANTI-BACTERIAL STAIN RESISTANT FABRIC



Black



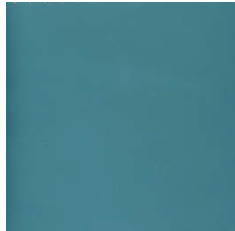
Charcoal



Blue



Royal Blue

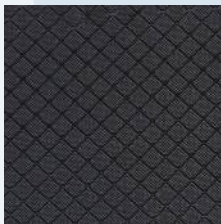


Teal

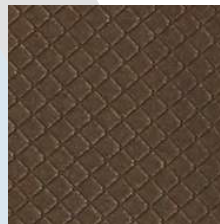


Red

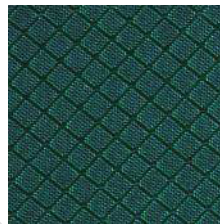
DIAMOND RIPSTOP



Black



Bronze



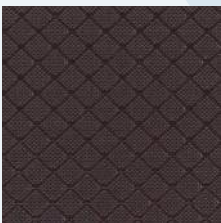
Green



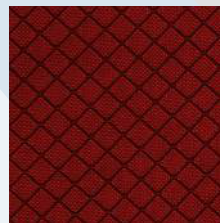
Royal Blue



Purple



Brown



Burgundy



Charcoal Grey



Red



Navy

SOLID NYLON



Royal Blue



Green



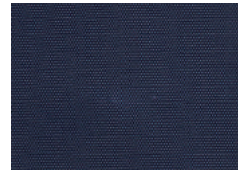
Black



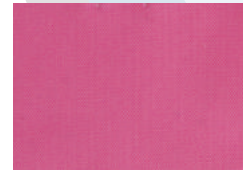
Burgundy



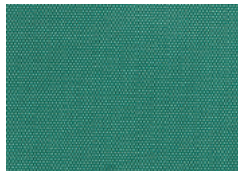
Red



Navy



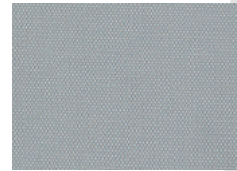
Pink



Teal

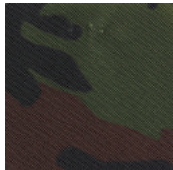


Purple

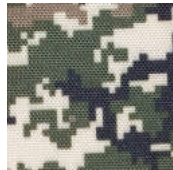


Silver

CAMOUFLAGE



Classic Camo



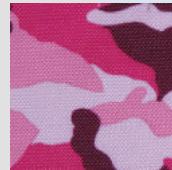
Digital Green



Digital Grey

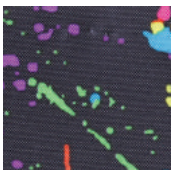


Blue Camo

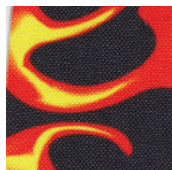


Pink Camo

CUSTOM FABRICS



Splatter



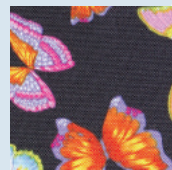
Orange Flames



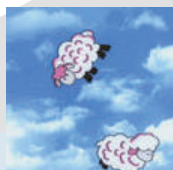
Blue Flames



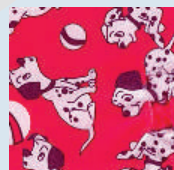
Plaid



Butterfly



Flying Sheep



Dalmatians

PROTECTION PERFORMANCE

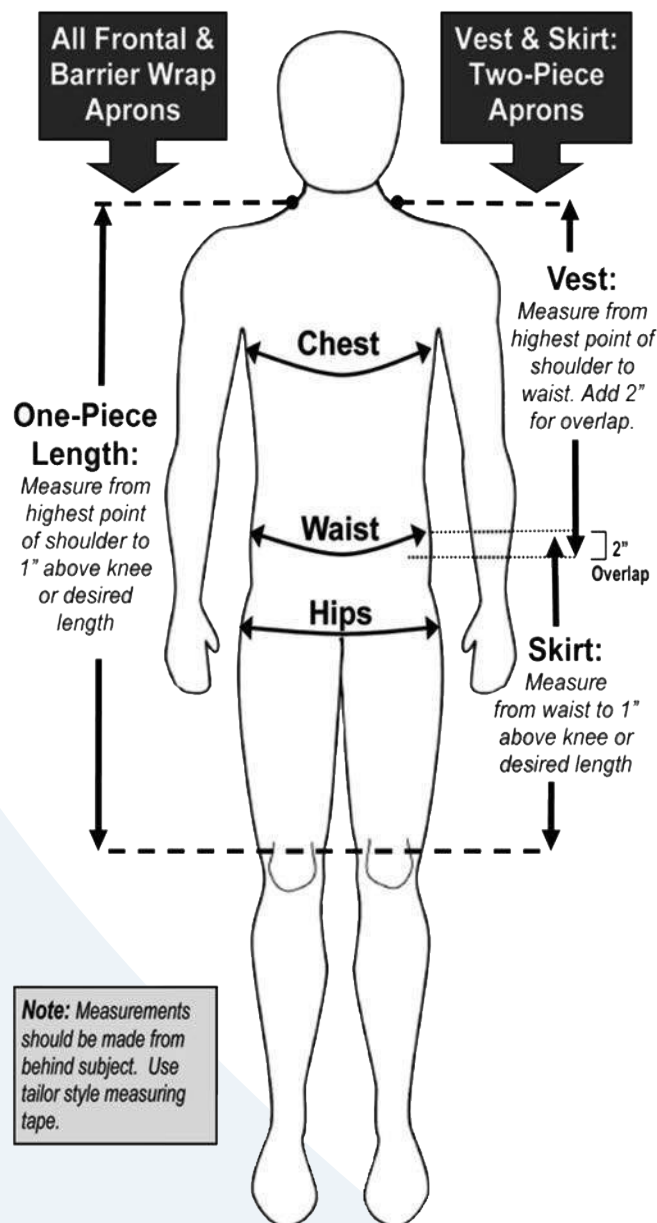
- all .5mm materials offer 100% attenuation @100KVP
- all .35mm materials offer 97% attenuation @ 100KVP

PB STANDARD™
Traditional Lead Material
.5mm & .35mm

PB LITE™
Lightweight Lead Material
.5mm & .35mm

PB FREE™
Lead and Toxin Free
.5mm & .35mm

APRON SIZING



EMBROIDERY OPTIONS

- Block or Script (shown above)
- Custom logo embroidery available upon request

Diagnostic Imaging

(BLOCK)

Diagnostic Imaging

(SCRIPT)

APRON SIZING CHART

FRONTAL APRONS

Size	Apron Size	Dress Size	Suit Size	Max Chest/Hip	Max Height
Small	20" x 32"	4 - 6	34 - 36	34"	5' - 6"
Medium	22" x 34"	8 - 10	38 - 40	38"	5' - 10"
Large	24" x 36"	12 - 14	42 - 44	42"	6' - 0"
X-Large	26" x 38"	16 - 18	46 - 48	46"	6' - 2"
XX-Large	28" x 40"	20 - 22	50 - 52	50"	6' - 4"

SKIRT AND VEST APRONS

Male					
Size	Vest Chest	Vest Length	Skirt Waist	Skirt Hips	Skirt Length
Small	36"	23.5"	26-30"	33-37"	21.5"
Medium	38"	24.5"	30-34"	37-41"	22.5"
Large	42"	25.5"	34-38"	42-46"	23"
X-Large	46"	26.5"	39-43"	46-50"	23"
Female					
Small	34"	21"	26-30"	33-37"	21.5"
Medium	36"	21.5"	30-34"	37-41"	22.5"
Large	38"	22"	34-38"	42-46"	23"
X-Large	40"	22.5"	39-43"	46-50"	23"

COAT TYPE APRONS

Wrap Size	Chest Size	Waist Size	Hip Size	Front Length	Rear Length
Small 18" Wide	33-36"	34-37"	35-38"	36"	34"
Medium 20" Wide	37-40"	38-41"	39-42"	38"	36"
Large 22" Wide	41-44"	42-45"	43-46"	40"	38"
X-Large 24" Wide	45-48"	46-49"	47-50"	42"	40"

CE
0120



 Barrier Technologies®



Barrier Technologies®